

# One And Done Pro Feeder Instructions

1. You can set up your One And Done feeder directly on the ground or elevated off the ground by strapping it to a tree or post.



2. Strap the feeder to a tree or post if there might be any interference from varmints. For use in areas heavily populated by bears, use 2-3 straps (placing it around the front of the barrel on the middle and bottom) to prevent bears from twisting the feeder back and forth to try to break the weld on the bracket. To prevent the feeder from being tipped over by hogs, simply bolt the feeder down to a 4x5 piece of plywood using the pre-drilled holes in the tripod legs.



3. Open the lid to make sure the V notch of the oblong funnel is lined up with the seam of the barrel. Push down firmly on the funnel to make sure it is sitting snugly against the weather guard.



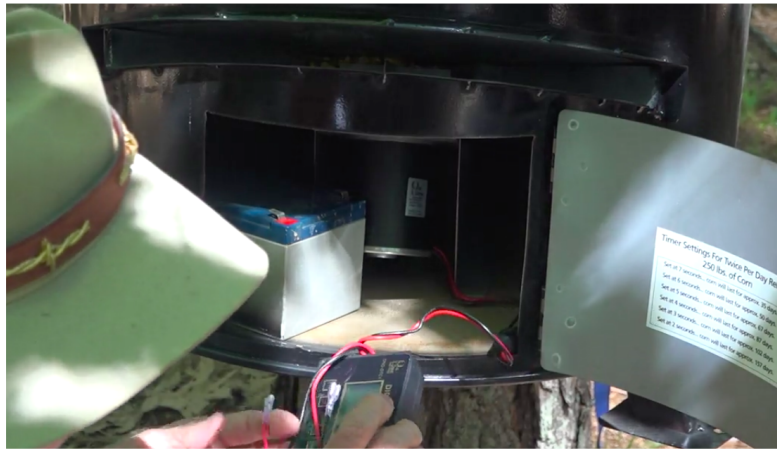
4. The feeder can be filled with any feed ranging in size from 0.125" to 0.5" in diameter such as corn, dirty corn, soybeans, dirty soybeans, peas, protein, or fish food.



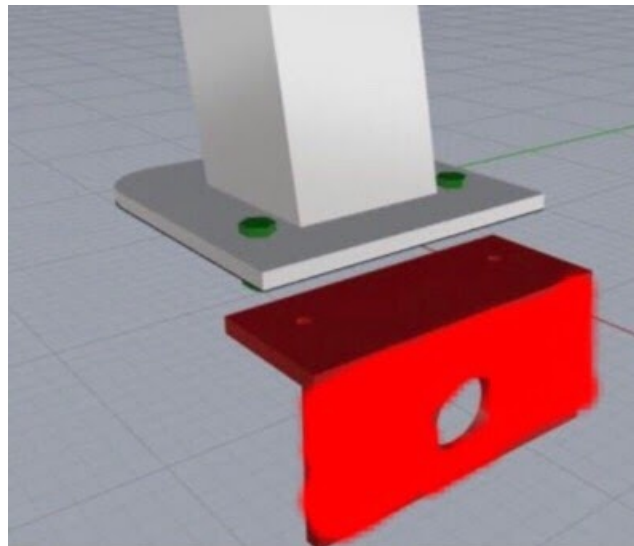
5. Close the top lid and add a pin to the lid latch for extra security.



6. In the bottom compartment, plug in the timer to the motor and connect the timer terminals to a 12 volt rechargeable battery. To ensure your feeder operates at peak performance, we recommend fully charging before the first use and recharging every 3 to 4 months.



7. For extra security against bears when securing the feeder to a tree, there is an additional support bracket. It secures the bottom to the tree to prevent a bear from being able to twist the feeder.



8. Now you're ready to program the timer.

# Timer Instructions

1. Press the SET button to turn on the unit. Once the unit turns on, "TIME" will appear on the screen. Use the HR and MIN buttons to set the current time, then press the SET button to confirm.
2. After confirming the time, "SPIN 1-6" will appear on the screen. Use the HR and MIN buttons to set up to six different start times. Then press SET to confirm. If you want to set less than six start times, use the HR button to toggle until it says "OFF." If you set a spin start time and want to remove it, hold down SET until it says "OFF."
3. After confirming motor start times, "SPIN TIME" will appear on the screen. Use the HR or MIN buttons to set the duration of a spin for between one to sixty seconds and then press SET to confirm.
4. Now "MOTOR SPEED" will appear on the screen. Use the HR or MIN buttons to set the motor speed to determine how quickly and how far you want the feed to be distributed. Choose from 50%, 75% and 100%. 100% is recommended for optimal performance. Press SET to confirm and you are finished setting the timer.
5. Add a lock to the compartment to secure everything inside.

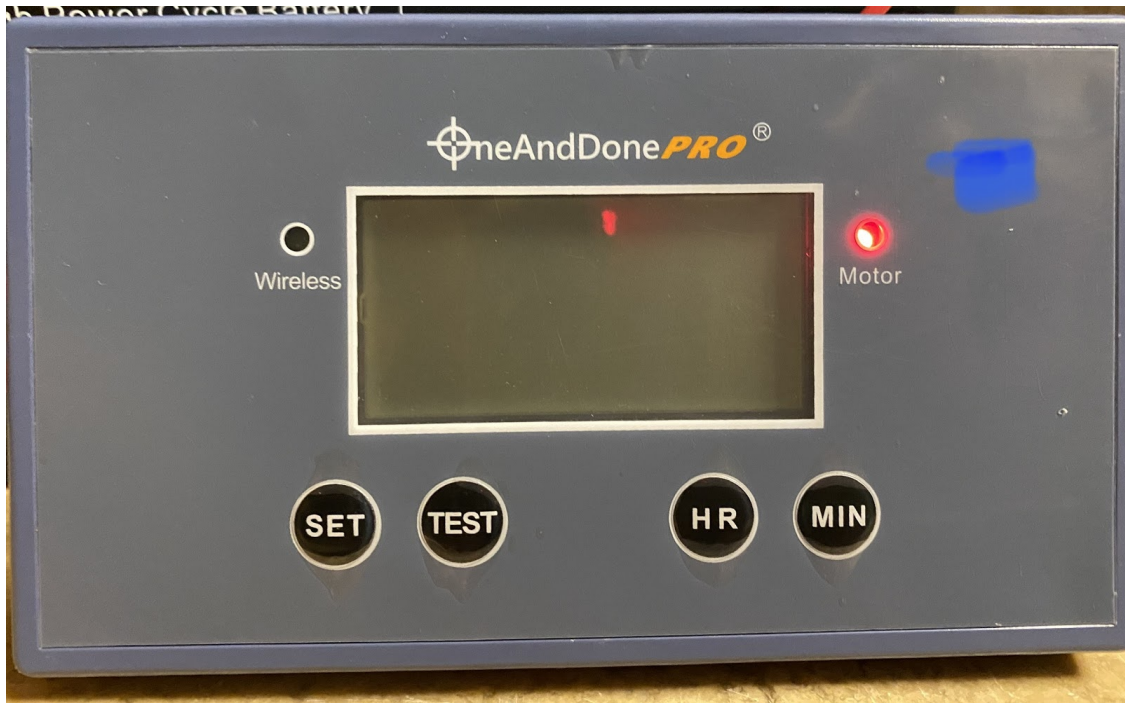


6. The feeder is now ready to use. If you've also purchased a remote, please see remote instructions on the next page.



# Remote Instructions

1. The remote will only work with our most recent model gray timer.
2. There's a hidden button on the timer where the blue marking is on the below picture. Press it once.



3. Then press any button on the remote and the light will flash three times.
4. It should now be paired successfully and ready to use!

Please contact us with any additional questions or troubleshooting. Thanks!

- *Big Game Awaits!* -